

Child Protection and Safeguarding Policy with Covid Appendix

Table of Contents

1. Aims	2
2. Legislation and statutory guidance	2
3. Definitions	2
4. Equality statement	3
5. Roles and responsibilities	3
6. Confidentiality	5
7. Recognising abuse and taking action	6
8. Notifying parents/carers	11
9. Mobile phones and cameras	11
10. Complaints and concerns about school safeguarding practices	11
11. Record-keeping	12
12. Training.....	12
13. Monitoring arrangements	13
Appendix 1: Types of abuse.....	14
Appendix 2: Safer recruitment and DBS checks – policy and procedures	16
Appendix 3: Allegations of abuse made against staff	19
Appendix 4: Specific safeguarding issues.....	24
Appendix 5: COVID-19 addendum	29

Prepared By	I.Howie
Approved By	Local Governing Board
Approval Date	November 2020
Policy Review Date	November 2021

HISP Multi Academy Trust

Portswood Primary School – Child Protection and Safeguarding Policy with Covid Appendix

1. Aims

The school aims to ensure that:

- Appropriate action is taken in a timely manner to safeguard and promote children's welfare
- All staff are aware of their statutory responsibilities with respect to safeguarding
- Staff are properly trained in recognising and reporting safeguarding issues

2. Legislation and statutory guidance

This policy is based on the Department for Education's statutory guidance, [Keeping Children Safe in Education \(KCSiE\)](#) and [Working Together to Safeguard Children](#), and the [Governance Handbook](#). We comply with this guidance and the procedures set out by Hampshire Safeguarding Children Board.

This policy is also based on the following legislation:

- Part 3 of the schedule to the [Education \(Independent School Standards\) Regulations 2014](#), which places a duty on academies and independent schools to safeguard and promote the welfare of students at the school
- [The Children Act 1989](#) (and [2004 amendment](#)), which provides a framework for the care and protection of children
- Section 5B(11) of the Female Genital Mutilation Act 2003, as inserted by section 74 of the [Serious Crime Act 2015](#), which places a statutory duty on teachers to report to the police where they discover that female genital mutilation (FGM) appears to have been carried out on a girl under 18
- [Statutory guidance on FGM](#), which sets out responsibilities with regards to safeguarding and supporting girls affected by FGM
- [The Rehabilitation of Offenders Act 1974](#), which outlines when people with criminal convictions can work with children
- Schedule 4 of the [Safeguarding Vulnerable Groups Act 2006](#), which defines what 'regulated activity' is in relation to children
- Statutory [guidance on the Prevent duty](#), which explains schools' duties under the Counter-Terrorism and Security Act 2015 with respect to protecting people from the risk of radicalisation and extremism
- Voyeurism Offences Act 2019 <http://www.legislation.gov.uk/ukpga/2019/2/enacted> (Section 67 of the Sexual Offences Act 2003)

This policy also complies with our funding agreement and articles of association.

3. Definitions

Safeguarding and promoting the welfare of children means:

- Protecting children from maltreatment

HISP Multi Academy Trust

Portswood Primary School – Child Protection and Safeguarding Policy with Covid Appendix

- Preventing impairment of children’s health or development
- Ensuring that children grow up in circumstances consistent with the provision of safe and effective care
- Taking action to enable all children to have the best outcomes

Child protection is part of this definition and refers to activities undertaken to prevent children suffering, or being likely to suffer, significant harm.

Abuse is a form of maltreatment of a child, and may involve inflicting harm or failing to act to prevent harm. Appendix 1 explains the different types of abuse.

Neglect is a form of abuse and is the persistent failure to meet a child’s basic physical and/or psychological needs, likely to result in the serious impairment of the child’s health or development. Appendix 1 defines neglect in more detail.

Children includes everyone under the age of 18.

4. Equality statement

Some children have an increased risk of abuse, and additional barriers can exist for some children with respect to recognising or disclosing it. We are committed to anti-discriminatory practice and recognise children’s diverse circumstances. We ensure that all children have the same protection, regardless of any barriers they may face.

We give special consideration to children who:

- are disabled and have specific additional needs or special educational needs (SEND);
- are young carers;
- may experience discrimination due to their race, ethnicity, religion, gender identification or sexuality;
- have English as an additional language;
- are known to be living in difficult situations – for example, temporary accommodation or where there are issues such as substance abuse; domestic violence or crime;
- are at risk of ‘honour-based’ violence (HBV) which includes FGM and forced marriage, sexual exploitation, forced marriage, or radicalisation;
- are asylum seekers; and
- are frequently missing/going missing from care or from home.

5. Roles and responsibilities

Safeguarding and child protection is **everyone’s** responsibility. This policy applies to all staff, volunteers and governors in the school and is consistent with the procedures Southampton’s Safeguarding Children’s Partnership (SSCP). Our policy and procedures also apply to extended school and off-site activities.

HISP Multi Academy Trust

Portswood Primary School – Child Protection and Safeguarding Policy with Covid Appendix

5.1 All staff

All staff will read at least part 1 of the Department for Education's statutory safeguarding guidance, [Keeping Children Safe in Education](#), (KCSiE) and review this guidance at least annually.

All staff will be aware of:

- Our systems which support safeguarding, including the staff code of conduct, the role of the designated safeguarding lead (DSL) as outlined in Annex B of the Department for Education's statutory safeguarding guidance, the behaviour policy, and the safeguarding response to children who go missing from education
- The early help process and their role in it, including identifying emerging problems, liaising with the DSL verbally or in writing (using the safeguarding conversation form if appropriate) and sharing information (when appropriate) with other professionals to support early identification and assessment
- The process for making referrals to local authority children's social care and for statutory assessments that may follow a referral, including the role they might be expected to play
- What to do if they identify a safeguarding issue or a child tells them they are being abused or neglected, including specific issues such as HBV, and how to maintain an appropriate level of confidentiality while liaising with relevant professionals
- The signs of different types of abuse and neglect, as well as specific safeguarding issues, such as peer on peer abuse (including bullying, sexual violence, sexual harassment, sexting and upskirting, now a criminal offence), serious violence, HBV and radicalisation.

Section 12 and appendix 4 of this policy outline in more detail how staff are supported to do this.

5.2 The designated safeguarding lead (DSL)

Our DSL is **Ian Howie**. The DSL takes lead responsibility for child protection and wider safeguarding as outlined in Annex B of KCSiE.

During term time, the DSL will be contactable during school hours for staff to discuss any safeguarding concerns.

The contact details are 02380 555885. The DSL can also be contacted by email at ian.howie@portswoodpri.org.uk

When the DSL is absent, the deputies – Tony Head and Anna Adams – will act as cover.

Other staff may become trained and act as deputies so that if the DSL or deputies are not available on site, they can be contacted and take a lead via telephone.

The DSL will be given the time, funding, training, resources and support to:

- Provide advice and support to other staff on child welfare and child protection matters
- Take part in strategy discussions and inter-agency meetings and/or support other staff to do so

HISP Multi Academy Trust

Portswood Primary School – Child Protection and Safeguarding Policy with Covid Appendix

- Contribute to the assessment of children
- Refer suspected cases, as appropriate, to the relevant body (local authority children's social care, Channel programme, Disclosure and Barring Service, and/or police), and support staff who make such referrals directly

The DSL will also keep the Head of School/Principal informed of any issues, and liaise with local authority case managers and designated officers for child protection concerns as appropriate.

The full responsibilities of the DSL are set out in their job description.

5.3 The Local Governing Body

The Local Governing Body will approve this policy at each review, and hold the Head of School/Principal to account for its implementation.

The Local Governing Body will appoint a governor to monitor the effectiveness of this policy in conjunction with the full Local Governing Body. This is always a different person from the DSL.

The chair of governors will act as the 'case manager' in the event that an allegation of abuse is made against the Head of School/Principal, where appropriate (see appendix 3).

5.4 The Head of School/Principal

The Head of School/Principal is responsible for the implementation of this policy, including:

- Ensuring that staff (including temporary staff) and volunteers are informed of this policy as part of their induction
- Communicating this policy to parents/carers when their child joins the school and via the school website
- Ensuring that the DSL has appropriate time, funding, training and resources, and that there is always adequate cover if the DSL is absent
- Ensuring that all staff undertake appropriate safeguarding and child protection training and update this regularly
- Acting as the 'case manager' in the event of an allegation of abuse made against another member of staff or volunteer, where appropriate (see appendix 3)

6. Confidentiality

To ensure confidentiality and data protection, our school adheres to the General Data Protection Regulation and Data Protection Act 2018 as follows:

- Our internal safeguarding programme, CPOMS, has limited basis access with dual login
- Timely information sharing is essential to effective safeguarding

HISP Multi Academy Trust

Portswood Primary School – Child Protection and Safeguarding Policy with Covid Appendix

- Information must only be shared on a 'need-to-know' basis, but we do not need consent to share information if a child is suffering, or at risk of, serious harm
- Staff should never promise a child that they will not tell anyone about an allegation, as this may not be in the child's best interests
- Confidentiality is also addressed in this policy with respect to record-keeping in section 11, and allegations of abuse against staff in appendix 3

7. Recognising abuse and taking action

Staff, volunteers and Local Governors must follow the procedures set out below in the event of a safeguarding issue.

7.1 If a child is in immediate danger

Make a referral to children's social care and/or the police **immediately** if a child is in immediate danger or at risk of harm. **Anyone can make a referral** but this is best carried out with the support of the DSL (see section 5.2); in any case tell the DSL as soon as possible if you absolutely have to make a referral directly.

All immediate safeguarding concerns should be made initially Southampton's Multi-Agency Safeguarding Hub (MASH). Southampton's Multi-Agency Safeguarding Hub manage all referrals and referrals can be made online or via a referral form. This may then be followed up with a telephone to the Children's Services Professionals line 023 8083 2300. The out of hours' team can be contacted on 02380 233344.

The following is a link to the GOV.UK webpage for reporting child abuse to your local council:

<https://www.gov.uk/report-child-abuse-to-local-council>

7.2 If a child makes a disclosure to you

If a child discloses a safeguarding issue to you, you should:

- Listen to and believe them. Allow them time to talk freely and do not ask leading questions
- Stay calm and do not show that you are shocked or upset
- Tell the child they have done the right thing in telling you. Do not tell them they should have told you sooner
- Explain what will happen next and that you will have to pass this information on. Do not promise to keep it a secret
- Write up your conversation as soon as possible in the child's own words. Stick to the facts, and do not put your own judgement on it
- Sign and date the write-up and pass it on to the DSL. Alternatively, if appropriate, make a referral to children's social care and/or the police directly (see 7.1), and tell the DSL as soon as possible that you have done so

HISP Multi Academy Trust

Portswood Primary School – Child Protection and Safeguarding Policy with Covid Appendix

7.3 If you discover that FGM has taken place or a student is at risk of FGM

The Department for Education's Keeping Children Safe in Education explains that FGM comprises "all procedures involving partial or total removal of the external female genitalia, or other injury to the female genital organs".

FGM is illegal in the UK and a form of child abuse with long-lasting, harmful consequences. It is also known as 'female genital cutting', 'circumcision' or 'initiation'.

Possible indicators that a student has already been subjected to FGM, and factors that suggest a student may be at risk, are set out in appendix 4.

Any teacher who discovers that an act of FGM appears to have been carried out on a **student under 18** must immediately report this to the police, personally. This is a statutory duty, and teachers will face disciplinary sanctions for failing to meet it.

The duty above does not apply in cases where a student is *at risk* of FGM or FGM is suspected but is not known to have been carried out. Staff should not examine students.

Any other member of staff who discovers that an act of FGM appears to have been carried out on a **student under 18** must speak to the DSL and follow our local safeguarding procedures.

Any member of staff who suspects a student is *at risk* of FGM, must speak to the DSL and follow our local safeguarding procedures.

For local information and guidance please refer to: sid.southampton.gov.uk

7.4 If you have concerns about a child (as opposed to a child being in immediate danger)

Figure 1 illustrates the procedure to follow if you have concerns about a child's welfare and the child is not in immediate danger.

Please speak to the DSL or if not available, a deputy DSL. If none are available Nicola Newnham, Business Manager will be able to contact one of the allocated staff who will speak to you on the telephone and direct the course of action. The DSL may direct you to make contact with Children's Services (see 'Referral' below).

You can also contact the charity NSPCC if you need advice on the appropriate action. You can call **0808 028 0285** (line is available from 8:00 AM to 8:00 PM Monday to Friday) or email: help@nspcc.org.uk

Early help

If early help is appropriate, the DSL will support you in liaising with other agencies and setting up an inter-agency assessment as appropriate.

The DSL will keep the case under constant review and the school will consider a referral to local authority children's social care if the situation does not seem to be improving. Timelines of interventions will be monitored and reviewed.

HISP Multi Academy Trust

Portswood Primary School – Child Protection and Safeguarding Policy with Covid Appendix

Referral

If it is appropriate to refer the case to Children’s services or the police, the DSL will make the referral or support you to do so (see Section 7.1).

The local authority will make a decision within 1 working day of a referral about what course of action to take and will let the person who made the referral know the outcome. The DSL or person who made the referral must follow up with the local authority if this information is not made available, and ensure outcomes are properly recorded.

If the child’s situation does not seem to be improving after the referral, the DSL or person who made the referral must contact the local authority and make sure the case is reconsidered to ensure the concerns have been addressed and the child’s situation improves.

7.5 If you have concerns about extremism

If a child is not at immediate risk of harm, where possible, speak to the DSL first to agree a course of action. Alternatively, make a referral to Children’s Services directly if appropriate (see ‘Referral’ above).

Where there is a concern, the DSL will consider the level of risk and decide which agency to make a referral to. This could include [Channel](#), the government’s programme for identifying Children’s Services.

The Department for Education also has a dedicated telephone helpline, 020 7340 7264, that school staff and governors can call to raise concerns about extremism with respect to a student. You can also email counter.extremism@education.gov.uk. Note that this is not for use in emergency situations.

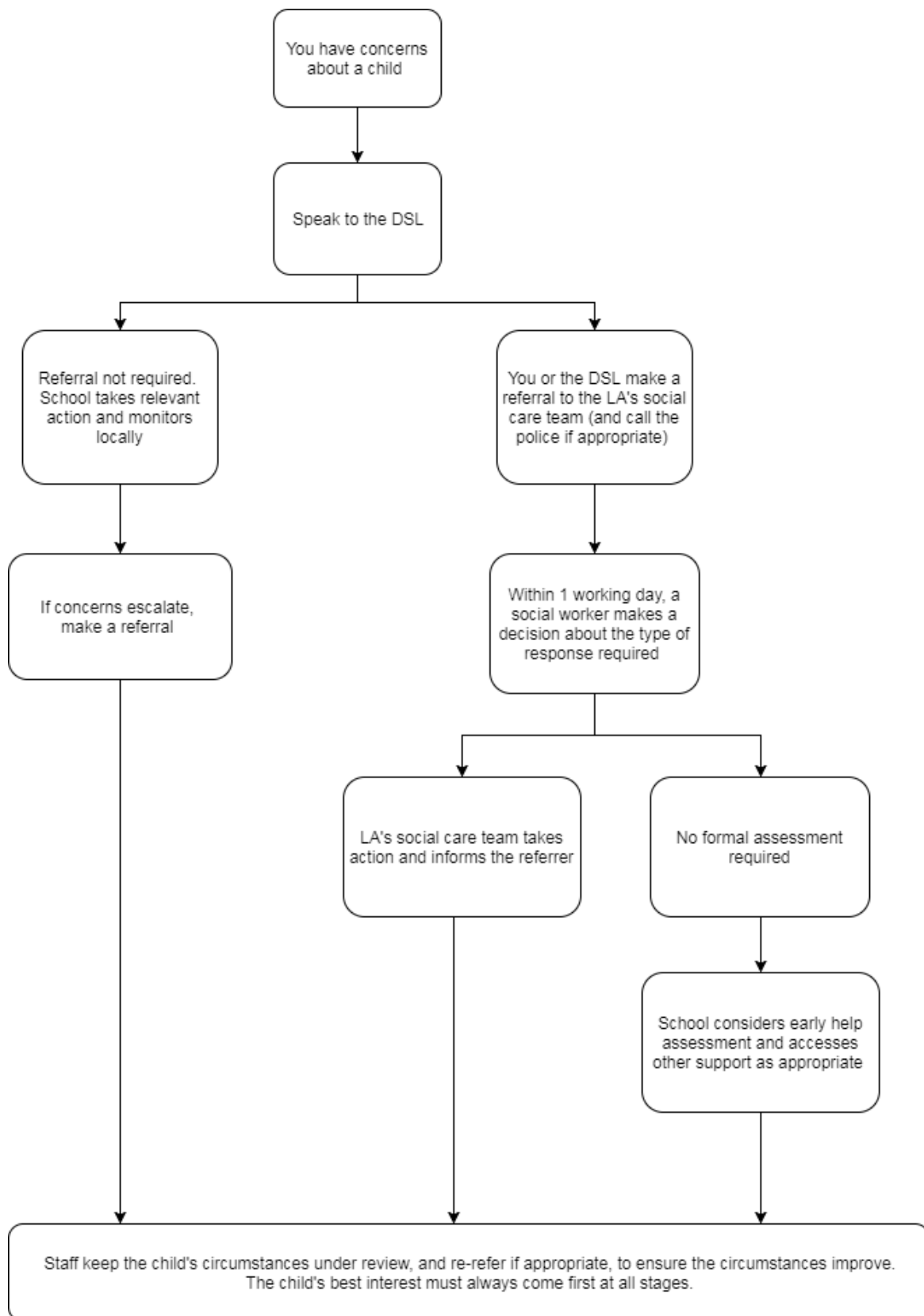
In an emergency, call 999 or the confidential anti-terrorist hotline on 0800 789 321 if you:

- Think someone is in immediate danger
- Think someone may be planning to travel to join an extremist group
- See or hear something that may be terrorist-related

HISP Multi Academy Trust

Portswood Primary School – Child Protection and Safeguarding Policy with Covid Appendix

Figure 1: procedure if you have concerns about a child’s welfare (no immediate danger)



HISP Multi Academy Trust

Portswood Primary School – Child Protection and Safeguarding Policy with Covid Appendix

7.6 Concerns about a staff member or volunteer

If you have concerns about a member of staff or volunteer, speak to the Head of School/Principal. If you have concerns about the Head of School/Principal, speak to the chair of governors.

You can also discuss any concerns about any staff member or volunteer with the DSL.

The Head of School/Principal /chair of governors/DSL will then follow the procedures set out in appendix 3, if appropriate.

7.7 Allegations of abuse made against other students (peer on peer abuse)

We recognise that children are capable of abusing their peers. Abuse will never be tolerated or passed off as “banter” or “part of growing up”.

Most cases of students hurting other students will be dealt with under our school’s behaviour policy, but this child protection and safeguarding policy will apply to any allegations that raise safeguarding concerns. This might include where the alleged behaviour:

- Is serious, and potentially a criminal offence
- Could put students in the school at risk
- Is violent
- Involves students being forced to use drugs or alcohol
- Involves sexual violence (such as rape and sexual assault); sexual harassment (such as sexual comments); upskirting (which typically involves taking a picture under a person’s clothing without them knowing, with the intention of viewing their genitals or buttocks to obtain sexual gratification, or cause humiliation, distress or alarm) or sexting.

If a student makes an allegation of abuse against another student:

- The DSL will be informed and record the allegation but does not investigate it
- The DSL will contact Children’s Services and follow their advice, as well as the police if the allegation involves a potential criminal offence
- The DSL will put a risk assessment and support plan into place for all children involved – both the victim(s) and the child(ren) against whom the allegation has been made – with a named person they can talk to if needed
- The DSL will contact the children and adolescent mental health services (CAMHS), if appropriate

We will minimise the risk of peer on peer abuse by:

- Challenging any form of derogatory or sexualised language or behaviour
- Being vigilant to issues that particularly affect different genders – for example, sexting, upskirting, sexualised or aggressive touching or grabbing towards female students, and initiation or ‘hazing-type’ violence with respect to boys

HISP Multi Academy Trust

Portswood Primary School – Child Protection and Safeguarding Policy with Covid Appendix

- Ensuring our curriculum helps to educate students about appropriate behaviour and consent
- Ensuring staff are trained to understand that a student harming a peer could be a sign that the child is being abused themselves, and that this would fall under the scope of this policy

8. Notifying parents/carers

Where appropriate, we will discuss any concerns about a child with the child's parents/carers. The DSL will normally do this in the event of a suspicion or disclosure.

Other staff will only talk to parents/carers about any such concerns following consultation with the DSL.

If we believe that notifying the parents/carers would increase the risk to the child, we will discuss this with the local authority children's social care team before doing so.

In the case of allegations of abuse made against other children, we will normally notify the parents/carers of all the children involved.

9. Mobile phones and cameras

Mobile devices offer staff the opportunity to evidence and capture work, support with spellings, define and translate language, have access to timers and check calculations. Phones should not be used for personal communication in front of the pupils.

Staff will not take pictures or recordings of students on their personal phones or cameras.

We will follow the General Data Protection Regulation and Data Protection Act 2018 when taking and storing photos and recordings for use in the school.

10. Complaints and concerns about school safeguarding practices

10.1 Complaints against staff

Complaints against staff that are likely to require a child protection investigation will be handled in accordance with our procedures for dealing with allegations of abuse made against staff (see Appendix 3).

10.2 Other complaints

Any concerns should be raised with the DSL who will respond to complaints as a matter of urgency.

HISP Multi Academy Trust

Portswood Primary School – Child Protection and Safeguarding Policy with Covid Appendix

10.3 Whistle-blowing

Please refer to the separate whistle-blowing policy that covers concerns regarding the way the school safeguards students – including poor or unsafe practice, or potential failures.

11. Record-keeping

We will hold records in line with our records retention schedule.

All safeguarding concerns, discussions, decisions made and the reasons for those decisions, must be recorded in writing. If you are in any doubt about whether to record something, discuss it with the DSL.

Non-confidential records will be easily accessible and available. Confidential information and records will be held securely and only available to those who have a right or professional need to see them.

Safeguarding records relating to individual children will be retained for a reasonable period of time after they have left the school.

Our safeguarding record-keeping arrangements are as follows:

- All concerns are recorded on welfare concern forms and handed to the DSL.
- Records that are shared with MASH or outside agencies are stored electronically via CPOMS.
- Any paper records are held in the DSL's office in locked filing cabinets.
- The records will be retained in accordance with GDPR recommendations.

The school shares information with other agencies and when this is appropriate, in line with our local safeguarding procedures.

In addition:

- Appendix 2 sets out our policy on record-keeping specifically with respect to recruitment and pre-employment checks
- Appendix 4 sets out our policy on record-keeping with respect to allegations of abuse made against staff

12. Training

12.1 All staff

All staff members will undertake safeguarding and child protection training at induction, including on whistle-blowing procedures, to ensure they understand the school's safeguarding systems and their responsibilities, and can identify signs of possible abuse or neglect. This training will be regularly updated and will be in line with advice from Southampton's SSCP.

All staff will have training on the government's anti-radicalisation strategy, Prevent, to enable them to identify children at risk of being drawn into terrorism and to challenge extremist ideas.

HISP Multi Academy Trust

Portswood Primary School – Child Protection and Safeguarding Policy with Covid Appendix

Staff will also receive regular safeguarding and child protection updates (for example, through emails, e-bulletins and staff meetings) as required, but at least annually.

Volunteers will receive appropriate training, if applicable.

12.2 The DSL and deputies

The DSL and deputies will undertake child protection and safeguarding training at least every 2 years.

In addition, they will update their knowledge and skills at regular intervals and at least annually (for example, through e-bulletins, meeting other DSLs, or taking time to read and digest safeguarding developments).

They will also undertake Prevent awareness training.

12.3 Local Governing Body

All governors receive training about safeguarding, to make sure they have the knowledge and information needed to perform their functions and understand their responsibilities.

12.4 Recruitment – interview/appointment panels

At least one person on any interview/appointment panel for a post at the school will have undertaken safer recruitment training (to be updated every three years). This will cover, as a minimum, the contents of the Department for Education's statutory guidance, Keeping Children Safe in Education, and be in line with local safeguarding procedures.

13. Monitoring arrangements

This policy will be reviewed **annually** by the Local governing body

14. Links with other policies

This policy links to the following policies and procedures:

- Behaviour
- Staff code of conduct
- Complaints
- Health and safety
- Attendance
- Online safety
- Sex and relationship education
- First aid
- Whistleblowing

HISP Multi Academy Trust

Portswood Primary School – Child Protection and Safeguarding Policy with Covid Appendix

These appendices are based on the Department for Education's statutory guidance, **Keeping Children Safe in Education**.

Appendix 1: Types of abuse

Abuse, neglect, and safeguarding issues are rarely stand-alone events that can be covered by one definition or label. In most cases, multiple issues will overlap. Abuse can take place wholly online, or technology may be used to facilitate offline abuse.

Physical abuse may involve hitting, shaking, throwing, poisoning, burning or scalding, drowning, suffocating or otherwise causing physical harm to a child. Physical harm may also be caused when a parent or carer fabricates the symptoms of, or deliberately induces, illness in a child.

Emotional abuse is the persistent emotional maltreatment of a child such as to cause severe and adverse effects on the child's emotional development. Some level of emotional abuse is involved in all types of maltreatment of a child, although it may occur alone.

Emotional abuse may involve:

- Conveying to a child that they are worthless or unloved, inadequate, or valued only insofar as they meet the needs of another person
- Not giving the child opportunities to express their views, deliberately silencing them or 'making fun' of what they say or how they communicate
- Age or developmentally inappropriate expectations being imposed on children. These may include interactions that are beyond a child's developmental capability, as well as overprotection and limitation of exploration and learning, or preventing the child participating in normal social interaction
- Seeing or hearing the ill-treatment of another
- Serious bullying (including cyberbullying), causing children frequently to feel frightened or in danger, or the exploitation or corruption of children

Sexual abuse involves forcing or enticing a child or young person to take part in sexual activities, not necessarily involving a high level of violence, whether or not the child is aware of what is happening. The activities may involve:

- Physical contact, including assault by penetration (for example rape or oral sex) or non-penetrative acts such as masturbation, kissing, rubbing and touching outside of clothing
- Non-contact activities, such as involving children in looking at, or in the production of, sexual images, watching sexual activities, encouraging children to behave in sexually inappropriate ways, or grooming a child in preparation for abuse (including via the internet)

Sexual abuse is not solely perpetrated by adult males. Women can also commit acts of sexual abuse, as can other children. The sexual abuse of children by other children is a specific safeguarding issue in education.

HISP Multi Academy Trust

Portswood Primary School – Child Protection and Safeguarding Policy with Covid Appendix

Neglect is the persistent failure to meet a child’s basic physical and/or psychological needs, likely to result in the serious impairment of the child’s health or development. Neglect may occur during pregnancy as a result of maternal substance abuse.

Once a child is born, neglect may involve a parent or carer failing to:

- Provide adequate food, clothing and shelter (including exclusion from home or abandonment); Protect a child from physical and emotional harm or danger; Ensure adequate supervision (including the use of inadequate care-givers); Ensure access to appropriate medical care or treatment
- It may also include neglect of, or unresponsiveness to, a child’s basic emotional needs.

HISP Multi Academy Trust

Portswood Primary School – Child Protection and Safeguarding Policy with Covid Appendix

Appendix 2: Safer recruitment and DBS checks – policy and procedures

We will record all information on the checks carried out in the school's single central record (SCR). Copies of these checks, where appropriate, will be held in individuals' personnel files. We follow requirements and best practice in retaining copies of these checks, as set out below.

Appointing new staff

When appointing new staff, we will:

- Verify their identity
- Obtain (via the applicant) an enhanced Disclosure and Barring Service (DBS) certificate, including barred list information for those who will be engaging in regulated activity (see definition below). We will not keep a copy of this for longer than 6 months
- Obtain a separate barred list check if they will start work in regulated activity before the DBS certificate is available
- Verify their mental and physical fitness to carry out their work responsibilities
- Verify their right to work in the UK. We will keep a copy of this verification for the duration of the member of staff's employment and for 2 years afterwards
- Verify their professional qualifications, as appropriate
- Ensure they are not subject to a prohibition order if they are employed to be a teacher
- Carry out further additional checks, as appropriate, on candidates who have lived or worked outside of the UK. See www.gov.uk for further information
- Check that candidates taking up a management position are not subject to a prohibition from management (section 128) direction made by the secretary of state
- Ask for written information about previous employment history and check that information is not contradictory or incomplete

We will seek references on all short-listed candidates, including internal candidates, before interview. We will scrutinise these and resolve any concerns before confirming appointments.

Regulated activity means a person who will be:

- Responsible, on a regular basis in a school or college, for teaching, training, instructing, caring for or supervising children
- Carrying out paid, or unsupervised unpaid, work regularly in a school or college where that work provides an opportunity for contact with children
- Engaging in intimate or personal care or overnight activity, even if this happens only once and regardless of whether they are supervised or not

HISP Multi Academy Trust

Portswood Primary School – Child Protection and Safeguarding Policy with Covid Appendix

Existing staff

If we have concerns about an existing member of staff's suitability to work with children, we will carry out all the relevant checks as if the individual was a new member of staff. We will also do this if an individual moves from a post that is not regulated activity to one that is.

We will refer to the DBS anyone who has harmed, or poses a risk of harm, to a child or vulnerable adult:

- Where the 'harm test' is satisfied in respect of the individual (i.e. that no action or inaction occurred but the present risk that it could was significant)
- Where the individual has received a caution or conviction for a relevant offence
- If there is reason to believe that the individual has committed a listed relevant offence, under the [Safeguarding Vulnerable Groups Act 2006 \(Prescribed Criteria and Miscellaneous Provisions\) Regulations 2009](#)
- If the individual has been removed from working in regulated activity (paid or unpaid) or would have been removed if they had not left

Agency and third-party staff

We will obtain written notification from any agency or third-party organisation that it has carried out the necessary safer recruitment checks that we would otherwise perform. We will also check that the person presenting themselves for work is the same person on whom the checks have been made.

Contractors

We will ensure that any contractor, or any employee of the contractor, who is to work at the school has had the appropriate level of DBS check. This will be:

- An enhanced DBS check with barred list information for contractors engaging in regulated activity
- An enhanced DBS check, not including barred list information, for all other contractors who are not in regulated activity but whose work provides them with an opportunity for regular contact with children

We will obtain the DBS check for self-employed contractors.

We will not keep copies of such checks for longer than 6 months.

Contractors who have not had any checks will not be allowed to work unsupervised or engage in regulated activity under any circumstances.

We will check the identity of all contractors and their staff on arrival at the school.

Trainee/student teachers

Where applicants for initial teacher training are salaried by us, we will ensure that all necessary checks are carried out.

HISP Multi Academy Trust

Portswood Primary School – Child Protection and Safeguarding Policy with Covid Appendix

Where trainee teachers are fee-funded, we will obtain written confirmation from the training provider that necessary checks have been carried out and that the trainee has been judged by the provider to be suitable to work with children.

Volunteers

We will:

- Never leave an unchecked volunteer unsupervised or allow them to work in regulated activity
- Obtain an enhanced DBS check with barred list information for all volunteers who are new to working in regulated activity
- Obtain an enhanced DBS check without barred list information for all volunteers who are not in regulated activity, but who have an opportunity to come into contact with children on a regular basis, for example, supervised volunteers
- Carry out a risk assessment when deciding whether to seek an enhanced DBS check for any volunteers not engaging in regulated activity

Local Governing Body

- All governors will have an enhanced DBS check without barred list information and section 128 check. They will have an enhanced DBS check with barred list information if working in regulated activity.

All trustees, proprietors and local governors will also have the following checks:

- Right to work in the UK
- Other checks deemed necessary if they have lived or worked outside the UK

Adults who supervise students on work experience

When organising work experience, we will ensure that policies and procedures are in place to protect children from harm.

We will also consider whether it is necessary for barred list checks to be carried out on the individuals who supervise a student under 16 on work experience. This will depend on the specific circumstances of the work experience, including the nature of the supervision, the frequency of the activity being supervised, and whether the work is regulated activity.

Students staying with host families

Where the school makes arrangements for students to be provided with care and accommodation by a host family to which they are not related (for example, during a foreign exchange visit), we will request enhanced DBS checks with barred list information on those people.

Where the school is organising such hosting arrangements overseas and host families cannot be checked in the same way, we will work with our partner schools abroad to ensure that similar assurances are undertaken prior to the visit.

HISP Multi Academy Trust

Portswood Primary School – Child Protection and Safeguarding Policy with Covid Appendix

Appendix 3: Allegations of abuse made against staff

Complaints or concerns will be managed independently under internal procedures.

Complaints could include:

- Breaches of the Code of Conduct
- Failure to follow policy, procedure or guidance
- Any breach of data protection or confidentiality
- Poor behaviour management
- Inappropriate use of social media
- Misadministration of medication

Concerns could include:

- Inappropriate use of language, shouting or swearing
- Discussing personal or sexual relationships with, or in the presence, of pupils
- Making (or encouraging others to make) unprofessional comments which scapegoat, demean or humiliate children, or might be interpreted as such.

Procedure for dealing with allegations

This procedure applies to all cases in which it is alleged that a current member of staff, volunteer or another adult who works with children has:

- **behaved in a way that has harmed a child, or may have harmed a child;**
- **possibly committed a criminal offence against or related to a child; or**
- **behaved towards a child or children in a way that indicates he or she would pose a risk of harm to children.**

It applies regardless of whether the alleged abuse took place in the school. Allegations against a teacher who is no longer teaching and historical allegations of abuse will be referred to the police.

We will deal with any allegation very quickly, in a fair and consistent way that provides effective child protection while also supporting the individual who is the subject of the allegation.

Our procedures for dealing with allegations will be applied with common sense and judgement.

Suspension

Suspension will not be the default position, and will only be considered in cases where there is reason to suspect that a child or other children is/are at risk of harm, or the case is so serious that it might be grounds for dismissal. In such cases, we will only suspend an

HISP Multi Academy Trust

Portswood Primary School – Child Protection and Safeguarding Policy with Covid Appendix

individual if we have considered all other options available and there is no reasonable alternative.

Based on an assessment of risk, we will consider alternatives such as:

- Redeployment within the school so that the individual does not have direct contact with the child or children concerned
- Providing an assistant to be present when the individual has contact with children
- Redeploying the individual to alternative work in the school so that they do not have unsupervised access to children
- Moving the child or children to classes where they will not come into contact with the individual, making it clear that this is not a punishment and parents/carers have been consulted
- Temporarily redeploying the individual to another role in a different location, for example to an alternative school

Definitions for outcomes of allegation investigations

- **Substantiated:** there is sufficient evidence to prove the allegation
- **Malicious:** there is sufficient evidence to disprove the allegation and there has been a deliberate act to deceive
- **False:** there is sufficient evidence to disprove the allegation
- **Unsubstantiated:** there is insufficient evidence to either prove or disprove the allegation (this does not imply guilt or innocence)
- **Unfounded:** to reflect cases where there is no evidence or proper basis which supports the allegations being made

In the event of an allegation that meets the criteria above, the Head of School/Principal (or Executive Headteacher/CEO of Trust where the Head of School/Principal is the subject of the allegation) – the ‘case manager’ – will take the following steps:

- Immediately discuss the allegation with the Local Authority Designated Officer (LADO). This is to consider the nature, content and context of the allegation and agree a course of action, including whether further enquiries are necessary to enable a decision on how to proceed, and whether it is necessary to involve the police and/or children’s services. (The case manager may, on occasion, consider it necessary to involve the police *before* consulting the designated officer – for example, if the accused individual is deemed to be an immediate risk to children or there is evidence of a possible criminal offence. In such cases, the case manager will notify the LADO as soon as practicably possible after contacting the police)
- Inform the accused individual of the concerns or allegations and likely course of action as soon as possible after speaking to the LADO. Where the police and/or children’s services are involved, the case manager will only share such information with the individual as has been agreed with those agencies
- Where appropriate (in the circumstances described above), carefully consider whether suspension of the individual from contact with children at the school is justified or

HISP Multi Academy Trust

Portswood Primary School – Child Protection and Safeguarding Policy with Covid Appendix

whether alternative arrangements such as those outlined above can be put in place. Advice will be sought as appropriate

- **If immediate suspension is considered necessary**, agree and record the rationale for this with the LADO. The record will include information about the alternatives to suspension that have been considered, and why they were rejected. Written confirmation of the suspension will be provided to the individual facing the allegation or concern within 1 working day, and the individual will be given a named contact at the school and their contact details
- **If it is decided that no further action is to be taken** in regard to the subject of the allegation or concern, record this decision and the justification for it and agree with the LADO what information should be put in writing to the individual and by whom, as well as what action should follow both in respect of the individual and those who made the initial allegation
- **If it is decided that further action is needed**, take steps as agreed with the LADO to initiate the appropriate action in school and/or liaise with the police and/or children's services as appropriate
- Provide effective support for the individual facing the allegation or concern, including appointing a named representative to keep them informed of the progress of the case and consider what other support is appropriate. This could also be trade union representatives or a colleague.
- Inform the parents or carers of the child/children involved about the allegation as soon as possible if they do not already know (following agreement with children's services and/or the police, if applicable). The case manager will also inform the parents or carers of the requirement to maintain confidentiality about any allegations made against teachers (where this applies) while investigations are ongoing. Any parent or carer who wishes to have the confidentiality restrictions removed in respect of a teacher will be advised to seek legal advice
- Keep the parents or carers of the child/children involved informed of the progress of the case and the outcome, where there is not a criminal prosecution, including the outcome of any disciplinary process (in confidence)
- Make a referral to the DBS where it is thought that the individual facing the allegation or concern has engaged in conduct that harmed or is likely to harm a child, or if the individual otherwise poses a risk of harm to a child

If the school is made aware that the secretary of state has made an interim prohibition order in respect of an individual, we will immediately suspend that individual from teaching, pending the findings of the investigation by the National College for Teaching and Leadership.

Where the police are involved, wherever possible the governing body will ask the police at the start of the investigation to obtain consent from the individuals involved to share their statements and evidence for use in the school's disciplinary process, should this be required at a later point.

HISP Multi Academy Trust

Portswood Primary School – Child Protection and Safeguarding Policy with Covid Appendix

Timescales

- Any cases where it is clear immediately that the allegation is unsubstantiated or malicious will be resolved within 1 week
- If the nature of an allegation does not require formal disciplinary action, we will institute appropriate action within 3 working days
- If a disciplinary hearing is required and can be held without further investigation, we will hold this within 15 working days

Specific actions

Action following a criminal investigation or prosecution

The case manager will discuss with the local authority's designated officer whether any further action, including disciplinary action, is appropriate and, if so, how to proceed, taking into account information provided by the police and/or children's social care services.

Conclusion of a case where the allegation is substantiated

If the allegation is substantiated and the individual is dismissed or the school ceases to use their services, or the individual resigns or otherwise ceases to provide their services, the case manager and the school's personnel adviser will discuss with the designated officer whether to make a referral to the DBS for consideration of whether inclusion on the barred lists is required.

If the individual concerned is a member of teaching staff, the case manager and personnel adviser will discuss with the LADO whether to refer the matter prohibiting the individual from teaching.

Individuals returning to work after suspension

If it is decided on the conclusion of a case that an individual who has been suspended can return to work, the case manager will consider how best to facilitate this.

The case manager will also consider how best to manage the individual's contact with the child or children who made the allegation, if they are still attending the school.

Unsubstantiated or malicious allegations

If an allegation is shown to be deliberately invented, or malicious, the Head of School/Principal, or other appropriate person in the case of an allegation against the Head of School/Principal, will consider whether any disciplinary action is appropriate against the student(s) who made it, or whether the police should be asked to consider whether action against those who made the allegation might be appropriate, even if they are not a student.

Confidentiality

The school will make every effort to maintain confidentiality and guard against unwanted publicity while an allegation is being investigated or considered.

The case manager will take advice from the local authority's designated officer, police and children's social care services, as appropriate, to agree:

- Who needs to know about the allegation and what information can be shared

HISP Multi Academy Trust

Portswood Primary School – Child Protection and Safeguarding Policy with Covid Appendix

- How to manage speculation, leaks and gossip, including how to make parents or carers of a child/children involved aware of their obligations with respect to confidentiality
- What, if any, information can be reasonably given to the wider community to reduce speculation
- How to manage press interest if, and when, it arises

Record-keeping

The case manager will maintain clear records about any case where the allegation or concern meets the criteria above and store them on the individual's confidential personnel file for the duration of the case. Such records will include:

- A clear and comprehensive summary of the allegation
- Details of how the allegation was followed up and resolved
- Notes of any action taken and decisions reached (and justification for these, as stated above)

If an allegation or concern is not found to have been malicious, the school will retain the records of the case on the individual's confidential personnel file, and provide a copy to the individual. We will retain these records at least until the individual has reached normal pension age, or for 10 years from the date of the allegation if that is longer.

The records of any allegation that is found to be malicious will be deleted from the individual's personnel file.

References

When providing employer references, we will not refer to any allegation that has been proven to be false, unsubstantiated or malicious, or any history of allegations where all such allegations have been proven to be false, unsubstantiated or malicious.

Learning lessons

After any cases where the allegations are *substantiated*, we will review the circumstances of the case with the local authority's designated officer to determine whether there are any improvements that we can make to the school's procedures or practice to help prevent similar events in the future.

This will include consideration of (as applicable):

- Issues arising from the decision to suspend the member of staff
- The duration of the suspension
- Whether or not the suspension was justified
- The use of suspension when the individual is subsequently reinstated. We will consider how future investigations of a similar nature could be carried out without suspending the individual

HISP Multi Academy Trust

Portswood Primary School – Child Protection and Safeguarding Policy with Covid Appendix

Appendix 4: Specific safeguarding issues

Children missing from education

<https://www.southampton.gov.uk/schools-learning/support-education/children-missing-education.aspx>

A child going missing from education is a potential indicator of abuse or neglect, and such children are at risk of being victims of harm, exploitation or radicalisation.

A child becomes defined as at risk of missing in education when the child has missed 40 consecutive sessions (20 days) but is still on roll at a school, the school has been unable to contact the family; and the reason for absence has not been established by the school.

There are many circumstances where a child may become missing from education, but some children are particularly at risk. These include children who:

- Are at risk of harm or neglect
- Come from Gypsy, Roma, or Traveller families
- Come from the families of service personnel
- Go missing or run away from home or care
- Are supervised by the youth justice system
- Cease to attend a school
- Come from new migrant families

We will follow our procedures for unauthorised absence and for dealing with children who go missing from education, particularly on repeat occasions, to help identify the risk of abuse and neglect, including sexual exploitation, and to help prevent the risks of going missing in future. This includes ensuring that we have at least two emergency contacts, informing the local authority if a child leaves the school without a new school being named, and adhering to requirements with respect to sharing information with the local authority, when applicable, when removing a child's name from the admission register at non-standard transition points.

Staff will be trained in signs to look out for and the individual triggers to be aware of when considering the risks of potential safeguarding concerns which may be related to being missing, such as travelling to conflict zones, FGM and forced marriage.

If a staff member suspects that a child is suffering from harm or neglect, we will follow local child protection procedures, including with respect to making reasonable enquiries. We will make an immediate referral to the local authority children's social care team, and the police, if the child is in immediate danger or at risk of harm.

Child sexual exploitation

Child sexual exploitation (CSE) is a form of sexual abuse where children are sexually exploited for money, power or status.

This can involve violent, humiliating and degrading sexual assaults, but does not always involve physical contact and can happen online. For example, young people may be

HISP Multi Academy Trust

Portswood Primary School – Child Protection and Safeguarding Policy with Covid Appendix

persuaded or forced to share sexually explicit images of themselves, have sexual conversations by text, or take part in sexual activities using a webcam.

Children or young people who are being sexually exploited may not understand that they are being abused. They often trust their abuser and may be tricked into believing they are in a loving, consensual relationship.

If a member of staff suspects CSE, they will discuss this with the DSL. The DSL will trigger the local safeguarding procedures, including a referral to the local authority's children's social care team and the police, if appropriate.

Indicators of sexual exploitation can include a child:

- Appearing with unexplained gifts or new possessions
- Associating with other young people involved in exploitation
- Having older boyfriends or girlfriends
- Suffering from sexually transmitted infections or becoming pregnant
- Displaying inappropriate sexualised behaviour
- Suffering from changes in emotional wellbeing
- Misusing drugs and/or alcohol
- Going missing for periods of time, or regularly coming home late
- Regularly missing school or education, or not taking part in education

Honour – Based Violence:

a) FGM

The DSL will make sure that staff have access to appropriate training to equip them to be alert to children affected by FGM or at risk of FGM.

Section 7.3 of this policy sets out the procedures to be followed if a staff member discovers that an act of FGM appears to have been carried out or suspects that a student is at risk of FGM.

Indicators that FGM has already occurred include:

- A student confiding in a professional that FGM has taken place
- A mother/family member disclosing that FGM has been carried out
- A family/student already being known to social services in relation to other safeguarding issues
- A girl:
 - Having difficulty walking, sitting or standing, or looking uncomfortable
 - Finding it hard to sit still for long periods of time (where this was not a problem previously)
 - Spending longer than normal in the bathroom or toilet due to difficulties urinating
 - Having frequent urinary, menstrual or stomach problems

HISP Multi Academy Trust

Portswood Primary School – Child Protection and Safeguarding Policy with Covid Appendix

- Avoiding physical exercise or missing PE
- Being repeatedly absent from school, or absent for a prolonged period
- Demonstrating increased emotional and psychological needs – for example, withdrawal or depression, or significant change in behaviour
- Being reluctant to undergo any medical examinations
- Asking for help, but not being explicit about the problem
- Talking about pain or discomfort between her legs

Potential signs that a student may be at risk of FGM include:

- The girl's family having a history of practising FGM (this is the biggest risk factor to consider)
- FGM being known to be practised in the girl's community or country of origin
- A parent or family member expressing concern that FGM may be carried out
- A family not engaging with professionals (health, education or other) or already being known to social care in relation to other safeguarding issues
- A girl:
 - Having a mother, older sibling or cousin who has undergone FGM
 - Having limited level of integration within UK society
 - Confiding to a professional that she is to have a "special procedure" or to attend a special occasion to "become a woman"
 - Talking about a long holiday to her country of origin or another country where the practice is prevalent, or parents/carers stating that they or a relative will take the girl out of the country for a prolonged period
 - Requesting help from a teacher or another adult because she is aware or suspects that she is at immediate risk of FGM
 - Talking about FGM in conversation – for example, a girl may tell other children about it (although it is important to take into account the context of the discussion)
 - Being unexpectedly absent from school
 - Having sections missing from her 'red book' (child health record) and/or attending a travel clinic or equivalent for vaccinations/anti-malarial medication

The above indicators and risk factors are not intended to be exhaustive.

b) Forced marriage

Forcing a person into marriage is a crime. A forced marriage is one entered into without the full and free consent of one or both parties and where violence, threats, or any other form of coercion is used to cause a person to enter into a marriage. Threats can be physical or emotional and psychological.

Staff will receive training around forced marriage and the presenting symptoms. We are aware of the 'one chance' rule, i.e. we may only have one chance to speak to the potential victim and only one chance to save them.

HISP Multi Academy Trust

Portswood Primary School – Child Protection and Safeguarding Policy with Covid Appendix

If a member of staff suspects that a student is being forced into marriage, they will speak to the student about their concerns in a secure and private place. They will then report this to the DSL.

The DSL will:

- Speak to the student about the concerns in a secure and private place
- Activate the local safeguarding procedures and refer the case to the local authority's designated officer
- Seek advice from the Forced Marriage Unit on 020 7008 0151 or fm@fco.gov.uk
- Refer the student to an education welfare officer, pastoral tutor, learning mentor, or school counsellor, as appropriate

Preventing radicalisation

Radicalisation refers to the process by which a person comes to support terrorism and forms of extremism. Extremism is vocal or active opposition to fundamental British values, such as democracy, the rule of law, individual liberty, and mutual respect and tolerance of different faiths and beliefs.

Schools have a duty to prevent children from being drawn into terrorism. The DSL will undertake Prevent awareness training and make sure that staff have access to appropriate training to equip them to identify children at risk.

We will assess the risk of children in our school being drawn into terrorism. This assessment will be based on an understanding of the potential risk in our local area, in collaboration with our local safeguarding children board and local police force.

We will ensure that suitable internet filtering is in place, and equip our students to stay safe online at school and at home.

There is no single way of identifying an individual who is likely to be susceptible to an extremist ideology. Radicalisation can occur quickly or over a long period.

Staff will be alert to changes in students' behaviour.

The government website [Educate Against Hate](#) and charity [NSPCC](#) say that signs that a student is being radicalised can include:

- Refusal to engage with, or becoming abusive to, peers who are different from themselves
- Becoming susceptible to conspiracy theories and feelings of persecution
- Changes in friendship groups and appearance
- Rejecting activities they used to enjoy
- Converting to a new religion
- Isolating themselves from family and friends
- Talking as if from a scripted speech
- An unwillingness or inability to discuss their views

HISP Multi Academy Trust

Portswood Primary School – Child Protection and Safeguarding Policy with Covid Appendix

- A sudden disrespectful attitude towards others
- Increased levels of anger
- Increased secretiveness, especially around internet use
- Expressions of sympathy for extremist ideologies and groups, or justification of their actions
- Accessing extremist material online, including on Facebook or Twitter
- Possessing extremist literature
- Being in contact with extremist recruiters and joining, or seeking to join, extremist organisations

Children who are at risk of radicalisation may have low self-esteem, or be victims of bullying or discrimination. It is important to note that these signs can also be part of normal teenage behaviour – staff should have confidence in their instincts and seek advice if something feels wrong.

If staff are concerned about a student, they will follow our procedures set out in section 7.5 of this policy, including discussing their concerns with the DSL.

Staff should **always** take action if they are worried.

Checking the identity and suitability of visitors

Prior to their visit, staff will complete a “visitor form” and submit this to reception.

All visitors will be required to verify their identity to the satisfaction of staff.

If the visitor is unknown to the setting, we will check their credentials and reason for visiting before allowing them to enter the setting. Visitors should be ready to produce identification.

Visitors are expected to sign the visitors’ book and wear a visitor’s badge.

All visitors to our setting, including visiting speakers, will be accompanied by a member of staff at all times. We will not invite into the school any speaker who is known to disseminate extremist views, and will carry out appropriate checks to ensure that any individual or organisation using school facilities is not seeking to disseminate extremist views or radicalise students or staff.

Non-collection of children

If a child who is normally collected from school identifies that they have not been collected, school staff will ensure communication is made with parents/carers to keep the child safe. If outside services need to be contacted this would be undertaken and recorded appropriately.

Missing students

Our procedures are designed to ensure that a missing child is found and returned to effective supervision as soon as possible. If a child goes missing, we will contact parents/carers as soon as we have checked the school site, liaise with police and outside agencies depending on the outcome of discussion with parents/carers and what is known about the child.

HISP Multi Academy Trust Portswood Primary School – Child Protection and Safeguarding Policy with Covid Appendix

Appendix 5: COVID-19 addendum

Context

The way schools and colleges are currently operating in response to coronavirus (COVID-19) is fundamentally different to business as usual. Most children are no longer in a school setting and staff numbers have been affected by the outbreak.

Schools have been asked to provide care for children who are vulnerable and children whose parents are critical to the COVID-19 response and cannot be safely cared for at home.

Version control and dissemination

This is version 1.0 of this appendix. It will be reviewed by our DSL or a deputy DSL on a weekly basis as circumstances continue to evolve or following updated Department for Education advice or guidance. It is available on the school website here and is made available to staff via the weekly bulletin.

We will ensure that on any given day all staff and volunteers in attendance will be aware of who the DSL and deputy DSLs are and how staff and volunteers can speak to them.

Safeguarding partners' advice

We continue to work closely with our safeguarding partners, and we will ensure this appendix is consistent with their advice. This will include expectations for supporting children with education, health and care (EHC) plans, the local authority designated officer and children's social care, reporting mechanisms, referral thresholds and children in need.

Safeguarding priority

During these challenging times the safeguarding of all students at our school – whether they are currently at home or in attendance – continues to be our priority. The following fundamental safeguarding principles remain the same:

- the best interests of children continue to come first
- if anyone in our school has a safeguarding concern, they will act immediately
- a designated safeguarding lead (DSL) or deputy DSL will always be available
- no unsuitable people will be allowed to gain access to children
- children should continue to be protected when they are online.

Roles and responsibilities

The roles and responsibilities for safeguarding in our school remain in line with our Child Protection Policy.

Our current team of DSLs consists of Ian Howie, Tony Head and Anna Adams. We will aim where possible to have at least one member of this team on school site; they will pass information directly to the DSL. If there is no one from this team on site, please contact the DSL directly.

HISP Multi Academy Trust

Portswood Primary School – Child Protection and Safeguarding Policy with Covid Appendix

If possible, our DSL and at least one deputy DSL will be available on site during the school day. Where this is not possible, we will have a trained DSL or deputy DSL available by phone and/or online video

Where our DSL or a deputy DSL cannot be on site, we will also ensure a senior leader from the school takes responsibility for co-ordinating safeguarding on site.

The DSL is always available via email (ian.howie@portswoodpri.org.uk subject: safeguarding) or via the DSL phone: **02380 555885**

Increased vulnerability or risk

Negative experiences and distressing life events, such as the current circumstances, can affect the mental health of students and their parents. Staff will be aware of this in setting expectations of students' work where they are at home. Where we are providing for children of critical workers and vulnerable children on site, we will ensure appropriate support is in place for them.

Attendance

Where a child is expected but does not arrive at school, we will follow our attendance procedure and attempt to contact the family. If contact cannot be made, the DSL or a deputy DSL will be informed.

The DSL or a deputy will attempt to contact the parents through various methods. If contact cannot be made or if the DSL or a deputy DSL deems it necessary, we will undertake a home visit or ask an appropriate agency to do so. A risk assessment will be carried out before any such visit is made to ensure staff and the family are not put at risk.

Where a vulnerable child does not take up their place, we will notify their social worker.

Our staff and volunteers will be aware of the mental health of children and their parents and carers and will contact the DSL or a deputy if they have any concerns.

Reporting concerns about children or staff

The importance of all staff and volunteers acting immediately on any safeguarding concerns remains. Staff and volunteers will continue to follow our Child Protection procedures and advise the DSL of any concerns they have about any child, including those who are not attending school.

The varied arrangements in place as a result of the COVID-19 measures do not reduce the risks that children may face from staff or volunteers. As such, it remains extremely important that any allegations of abuse made against staff or volunteers attending our school are dealt with thoroughly and efficiently.

Whistleblowing is also described in section 10 of our Child Protection Policy on page 11.

Peer on peer abuse

We recognise that children can abuse their peers and our staff are clear about the school's policy and procedures regarding peer on peer abuse. All peer on peer abuse is unacceptable and will be taken seriously. We also recognise that abuse can still occur during a school closure or partial closure and between those children who do attend the school site during these measures.

HISP Multi Academy Trust

Portswood Primary School – Child Protection and Safeguarding Policy with Covid Appendix

Our staff will remain vigilant to the signs of peer-on-peer abuse and will follow the process set out in our Child Protection Policy, see section 7.7 of our Child Protection Policy on page 10.

Online safety

It is likely that children will be using the internet and engaging with social media far more during this time. Our staff are aware of the signs of cyberbullying and other online risks and our filtering and monitoring software remains in use during this time to safeguarding and support children.

Our staff will follow the process for online safety set out in our Child Protection Policy.

Staff who interact with children online will continue to look out for signs a child may be at risk. If a staff member is concerned about a child, that staff member will follow the approach set out in this annex and report that concern to the DSL or to a deputy DSL.

Weekly reminders will continue to be sent to students and parents/carers.

Supporting children not in school

Where the DSL has identified a child to be on the edge of social care support, or who would normally receive additional pastoral support in school, they will ensure that a communication plan is in place to support that child. Details of that plan will be recorded in the safeguarding file for that child. It will be reviewed regularly to ensure it remains current during these measures.

Signed:

Dated: